

Multiple Choice
Introduction Topics

01. A programming language is considered _____ if program source code created on one type of computer platform can execute on another computer platform without any difficulty.

- (A) platform dependent
 - (B) platform independent
 - (C) public platform
 - (D) platform diving
-

02. Programs start out as _____ written by a programmer in a somewhat human language, like Java.

- (A) source code
 - (B) byte code
 - (C) executable code
 - (D) machine code
 - (E) access code
-

04. Java uses a compiler to translate *source code* into _____.

- (A) source code
 - (B) byte code
 - (C) executable code
 - (D) machine code
 - (E) access code
-

05. Which of the following is like the intermediate language of *English* in the *United Nations* analogy?

- (A) source code
 - (B) byte code
 - (C) executable code
 - (D) machine code
 - (E) access code
-

06. Bytecode is understood, and executed, by the _____.

- (A) assembler
- (B) compiler
- (C) JVM
- (D) text editor

08. A Java program that is designed to execute inside a stand-alone environment is called what?

- (A) an applet
- (B) an application
- (C) a compiler
- (D) an interpreter

09. Which of the following are basic Java tools.

- (A) IDE
 - (B) compiler
 - (C) interpreter
 - (D) All of the above
-

10. What type of software combines the 3 basic Java tools into one package?

- (A) IDE
 - (B) JDK
 - (C) JRE
 - (D) JVM
-

11. BlueJ is an example of a(n)

- (A) IDE
 - (B) JDK
 - (C) JRE
 - (D) JVM
-

12. What extension do Java source code files have?

- (A) .class
 - (B) .java
 - (C) .html
 - (D) .exe
 - (E) .rbt
-

13. What extension do Java bytecode files have?

- (A) .class
 - (B) .java
 - (C) .html
 - (D) .exe
 - (E) .rbt
-

14. What extension do most web page files have?

- (A) .class
 - (B) .java
 - (C) .html
 - (D) .exe
 - (E) .rbt
-

15. What does *IDE* stand for?

- (A) Internet Download Evaluation
 - (B) Internal Disk Erase
 - (C) Internal Development Environment
 - (D) Integrated Development Environment
-

16. What does *JDK* stand for?

- (A) Java Download Kit
 - (B) Java Development Kit
 - (C) Java Development Knowledge
 - (D) Just Development Kit
-

17. Which of the following is true about Java and the AP Computer Science Exam?

- (A) There are only a few available topics in Java, all of which you need to know.
 - (B) The number of topics available in Java is enormous, and you need to know every single one.
 - (C) The number of topics available in Java is enormous, and you need to know a subset of these.
 - (D) The number of topics available in Java is enormous, and you need to know a superset of these.
-

18. Which symbol is the “escape sequence” for a *tab*?

- (A) /t
 - (B) /a
 - (C) /b
 - (D) /TAB
 - (E) /BACK SPACE
-

19. Which symbol is the “escape sequence” for a *back space*?

- (A) /t
 - (B) /a
 - (C) /b
 - (D) /TAB
 - (E) /BACK SPACE
-

20. Java keywords are

- (A) case-sensitive.
 - (B) not case-sensitive.
 - (C) written in upper-case only.
 - (D) written in lower-case only.
-

21. Java program statements end with what punctuation?

- (A) period(.)
 - (B) comma (,)
 - (C) colon (:)
 - (D) semi-colon (;)
-

22. If the program source code contains the statement: **public class Abacus** then what must be the name of the file?

- (A) abacus
 - (B) Abacus
 - (C) abacus.java
 - (D) Abacus.java
 - (E) Abacus.html
-

23. If a Java file is named **Babbage.java**, then what line must be in the source code?

- (A) public class babbage
 - (B) public class babbage.java
 - (C) public class Babbage
 - (D) public class Babbage.java
-

24. If you compile a file called **Abacus.java** what file is created?

- (A) Abacus.exe
 - (B) Abacus.doc
 - (C) Abacus.class
 - (D) Abacus.html
-

25. A program with one or more compile errors

- (A) can compile, but the output execution will be wrong.
 - (B) can compile, but the output execution will be very slow.
 - (C) cannot compile, and as a consequence cannot execute.
 - (D) can compile, but will stop executing at the point of the compile error.
-

26. The syntax (sentence structure) of the source code Java program must be _____ percent correct before the source code can be translate into a bytecode file.

- (A) 100
 - (B) 90
 - (C) 70
 - (D) 50
-

27. Java program statements must be placed

- (A) anywhere in the program.
 - (B) at the beginning of the program only.
 - (C) between a set of braces.
 - (D) between a set of parentheses.
-
-

31. Which of the following are Java reserved words?

- (A) public
 - (B) static
 - (C) void
 - (D) main
 - (E) All of the above
-

34. Which symbol is used to create a *Single-Line Comment*?

- (A) //
- (B) \\
- (C) /*
- (D) */

35. Which symbol is used to begin a *Multi-Line Comment*?

- (A) //
 - (B) \\
 - (C) /*
 - (D) */
-

36. Which symbol is used to end a *Multi-Line Comment*?

- (A) //
 - (B) \\
 - (C) /*
 - (D) */
-

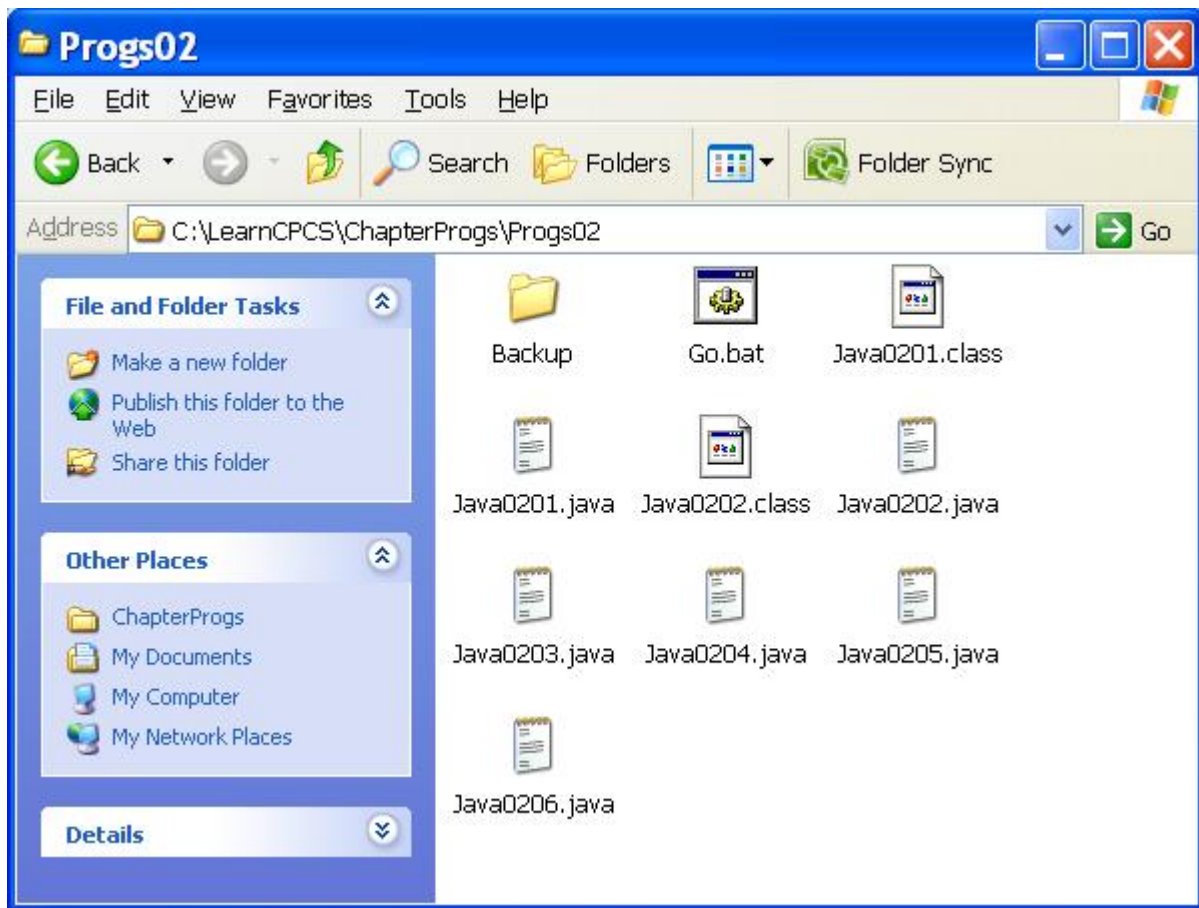
37. The **print** keyword

- (A) sends computer output to the printer.
 - (B) displays text output to the monitor without a carriage return.
 - (C) displays text output to the monitor with a carriage return.
 - (D) displays text that is entered at the keyboard to the monitor.
-

38. The **println** keyword

- (A) sends computer output to the printer.
- (B) displays text output to the monitor without a carriage return.
- (C) displays text output to the monitor with a carriage return.
- (D) displays text that is entered at the keyboard to the monitor.

39. Look at this screen display. Which files have been compiled?



- (A) Java0201.java only
- (B) Java0202.java only
- (C) Java0203.html only
- (D) Java0201.java & Java0202.java only
- (E) All of the java files have been compiled

-
40. What is the output of this program segment?

System.out.println("Computer Science");

- (A) Computer Science
- (B) ComputerScience
- (C) Computer
Science
- (D) Computer
Science
- (E) No Output

41. What is the output of this program segment?

```
System.out.println("Computer");  
System.out.println("Science");
```

- (A) Computer Science
 - (B) ComputerScience
 - (C) Computer
Science
 - (D) Computer
Science
 - (E) No Output
-

42. What is the output of this program segment?

```
System.out.print("Computer");  
System.out.print("Science");
```

- (A) Computer Science
 - (B) ComputerScience
 - (C) Computer
Science
 - (D) Computer
Science
 - (E) No Output
-

43. What is the output of this program segment?

```
// System.out.println("Computer");  
// System.out.println("Science");
```

- (A) Computer Science
 - (B) ComputerScience
 - (C) Computer
Science
 - (D) Computer
Science
 - (E) No Output
-

44. What is the output of this program segment?

```
System.out.println("Computer");  
System.out.println( );  
System.out.println("Science");
```

- (A) Computer Science
- (B) ComputerScience
- (C) Computer
Science
- (D) Computer
Science
- (E) No Output

45. What is the output of this program segment?

```
System.out.print("The ");  
// System.out.print("quick ");  
System.out.print("brown ");  
System.out.print("fox ");  
System.out.print("jumps ");  
System.out.print("over ");  
System.out.print("the ");  
// System.out.print("lazy ");  
System.out.print("dog.");
```

- (A) The quick brown fox jumps over the lazy dog.
 - (B) The brown fox jumps over the dog.
 - (C) The fox jumps over the dog.
 - (D) The quick brown fox jumps
 - (E) Compile Error
-

46. What is the output of this program segment?

```
System.out.print("The ");  
System.out.print("quick ");  
System.out.print("brown ");  
System.out.print("fox ");  
System.out.print("jumps ");  
/* System.out.print("over ");  
System.out.print("the ");  
System.out.print("lazy ");  
System.out.print("dog."); */
```

- (A) The quick brown fox jumps over the lazy dog.
- (B) The brown fox jumps over the dog.
- (C) The fox jumps over the dog.
- (D) The quick brown fox jumps
- (E) Compile Error

47. What is the output of this program segment?

```
System.out.print("The ");  
/* System.out.print("quick ");  
System.out.print("brown "); */  
System.out.print("fox ");  
System.out.print("jumps ");  
System.out.print("over ");  
System.out.print("the ");  
// System.out.print("lazy ");  
System.out.print("dog.");
```

- (A) The quick brown fox jumps over the lazy dog.
 - (B) The brown fox jumps over the dog.
 - (C) The fox jumps over the dog.
 - (D) The quick brown fox jumps
 - (E) Compile Error
-

48. What is the output of this program segment?

```
System.out.println("The ");  
System.out.println("quick ");  
System.out.println("brown ");  
System.out.println("fox ");  
System.out.println("jumps ");  
System.out.println("over ");  
System.out.println("the ");  
// sistim.OWT.pWintLINE('incredibly "]  
System.out.println("lazy ");  
System.out.println("dog.");
```

- (A) The quick brown fox jumps over the lazy dog.
- (B) The quick brown fox jumps over the incredibly lazy dog.
- (C) incredibly
- (D) No Output
- (E) Compile Error